



Between Quarters

Ron Belcher (RB)
(905)628-1787

belcher-rb@cogeco.ca

Between Quarters

- meet at centre circle and go to 60-sec time out positions
- no need to go to table unless you suspect a problem or you need info
- R has the ball at end opposite direction of play
- U to block at other end
- on warning signal, give "first horn" information

Between Quarters (cont'd)



Between Quarters (cont'd)



End of First Half

meet half way between centre circle
and sideline opposite table

End of First Half (cont'd)



End of First Half (cont'd)

- Go to the table together
- R checks:
 - scorers & timers
 - arrow switched
 - intermission time set and running
- leave together and return at least 3 mins before intermission is to end
- assume same positions as at start of game

End of First Half (cont'd)



Start of Second Half

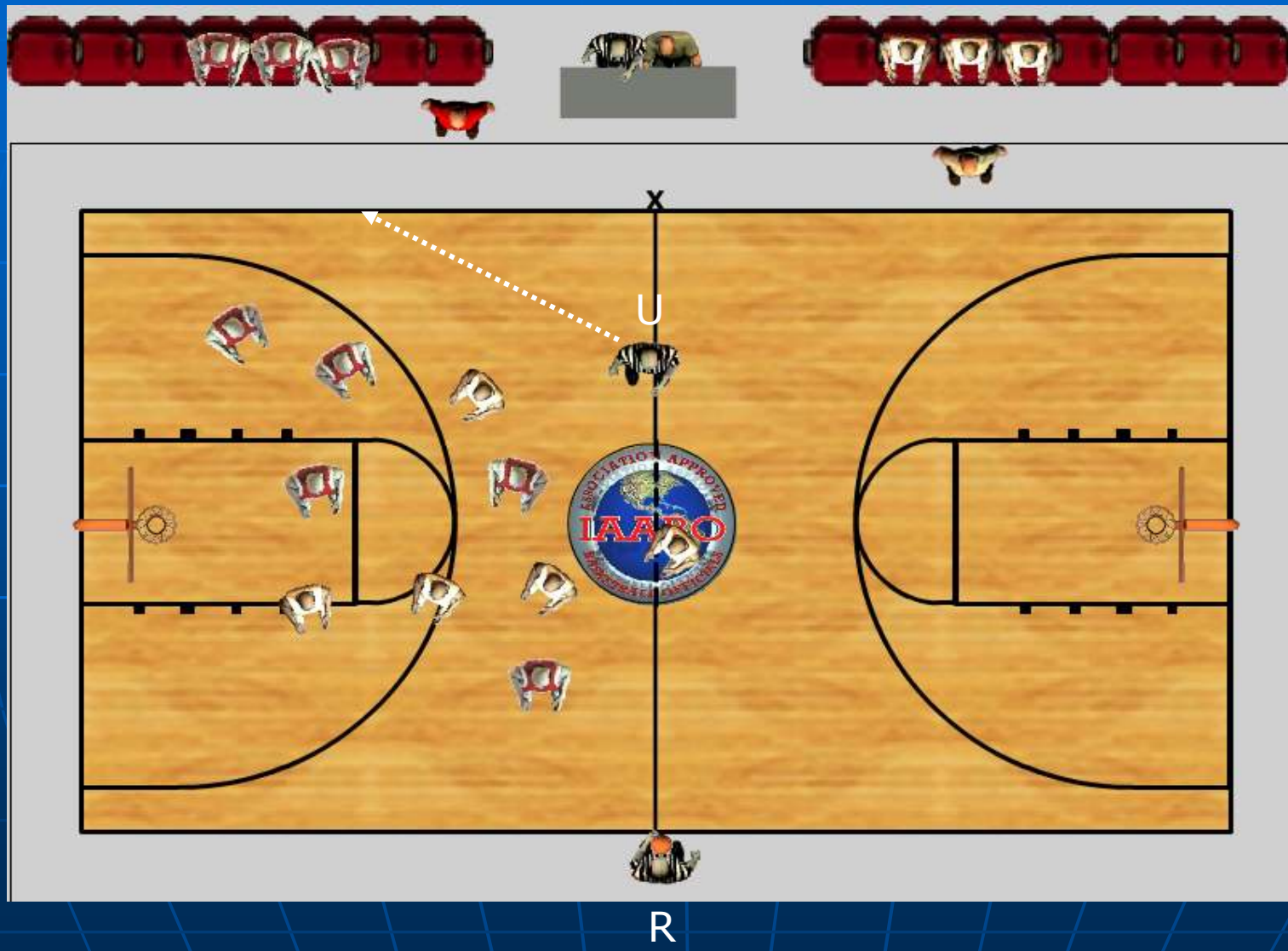
At 1 minute remaining:

- R & U come together at division line
- R stays and U goes to table:
 - Inform each coach regarding whose throw-in
 - Check with scorer for proper substitutions
 - Secure ball and deliver to R
 - U goes to sideline at free throw line extended

Start of Second Half



Start of Second Half



End of Game

- in most situations, just like the end of first half
- in difficult situations, could leave without going to table
- officials' jurisdiction ends when all officials leave visual confines of the court