



# Throw-in Mechanics

Ron Belcher (RB)  
(905)628-1787

[belcher-rb@cogeco.ca](mailto:belcher-rb@cogeco.ca)

# Line & Throw-in Responsibilities

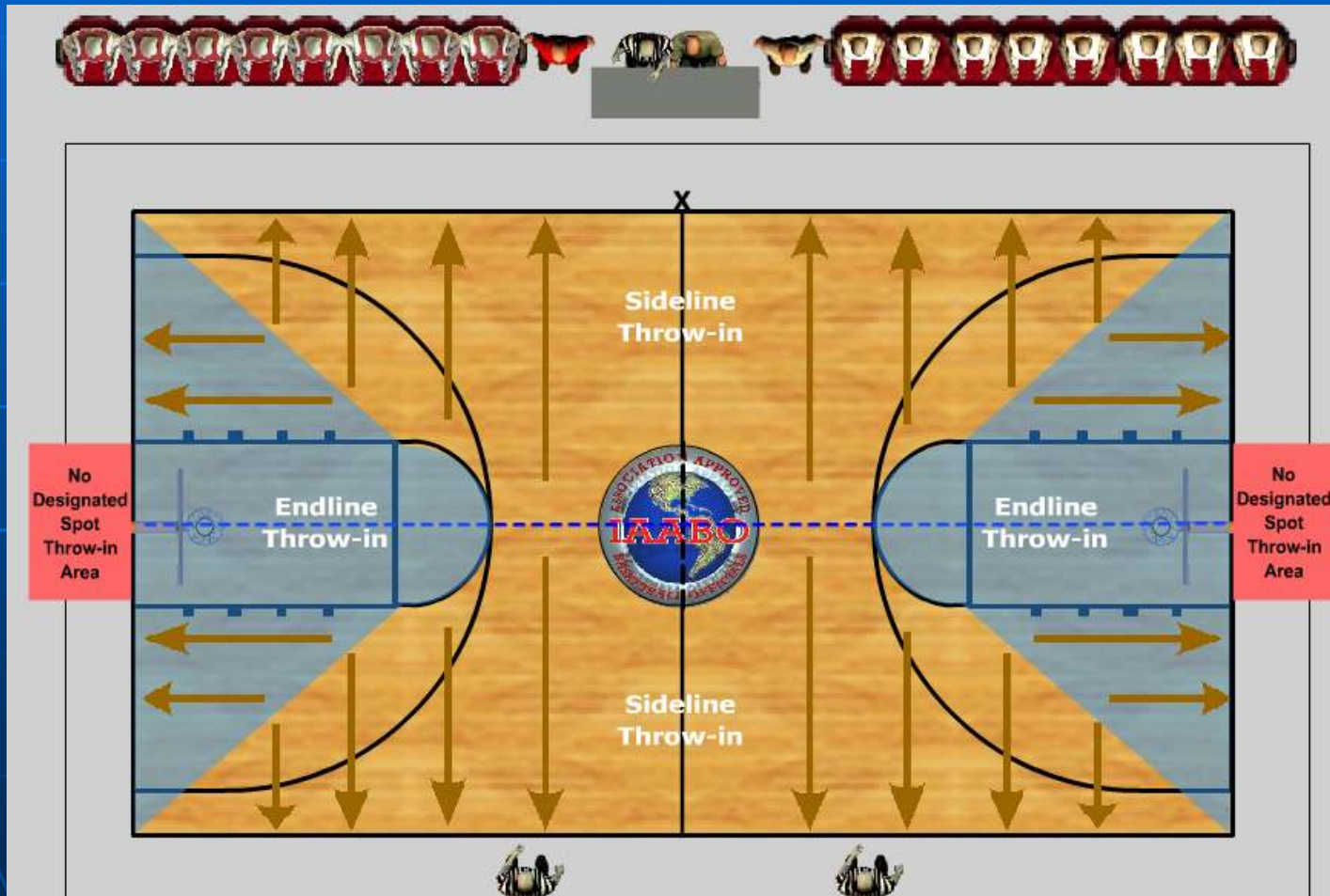


# Line & Throw-in Responsibilities

(cont'd)

- **Whose call?:**
  - whomever is responsible for the line
- **Location?:**
  - nearest violation (foul?)
  - endline not underneath basket

# The Throw In Locations



# Line & Throw-in Responsibilities

(cont'd)

- **Backcourt Throw-ins:**  
Trail handles them all
- **Frontcourt Throw-ins:**  
Handle the line you call
  - Trail sideline
  - Lead endline
    - lead side
    - trail side
  - Lead sideline
    - below free throw line extended
    - above free throw line extended

# The Throw In

- **Non Administering:**
  - handle substitutions if any
  - get to new position most efficient way
  - generally go around players
  - stop and eye contact partner when you are ready

# The Throw In (cont'd)

## ● **Administering:**

- don't put ball in play while partner:
  - is talking to table or coach
  - has his/her back to you
  - is still moving to new position
- box in, whistle in mouth, eye contact partner
- whistle if after intermission or unusual delay
- bounce to thrower except frontcourt endline
- stop clock signal and start visible count
- stop count on release
- time in when touched on floor

# The Throw In (cont'd)

- **As Trail:**

- **backcourt endline** - stay on endline until throw-in is controlled on court
- **sideline** - stay out of bounds behind thrower
- never bounce across the court or across the key

- **As Lead:**

- **endline** - hand and step away
- **sideline** - bounce up the sideline