

FIBA RULE CHANGES 2010

Prepared by

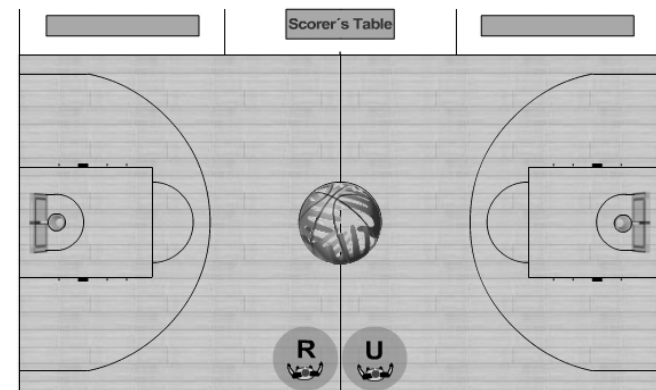
Paul Deshaies

CABO National Interpreter

Adapted by: Rich Stehlik (with Permission)

COURT

- 3-pt area : line at 6,75 m
- * **NOT USED in CIS ***
- No-charge semi-circle (1,25m)
- * **NOT USED in CIS ***
- Rectangular restricted area (4,9 X 5,8 m)
- * **USED IN GYMS NOT HAVING THE TRAPEZOID KEY PAINTED - CIS ***
- Throw-in line : at sideline, 8,325 m from endline, opposite scorer's table
- * **IF LINE IS NOT MARKED, BALL GETS INBOUNDED 1 STEP ABOVE THE CURRENT 3 pt ARC – CIS ***



* Points are Stehlik Additions

EQUIPMENT

- Compression sleeves and stockings permitted (same colour as shirt/shorts)

Stehlik Addition: Rule 4.4.2

INTERVAL OF PLAY

- Ends when ball is tossed or ball at disposal of thrower-in

INTERVAL OF PLAY

■ Question 1:

- At the beginning of the game, the referee enters the circle to administer the jump ball between jumpers A1 and B1. (a) Before the ball is tossed by the referee, (b) after the ball is tossed, but before it is legally tapped, (c) after the ball is legally tapped, B2 pushes A2. The official charges B2 with a personal foul. Is this correct?
- Answer: No in (a) This is a T; yes in (b) and (c).

STATUS OF THE BALL

- On the jump ball, live ball when ball leaves hands of referee

LAST SECOND SHOT

- The game clock must indicate 0:00.3 (three tenths of a second) or more for a player to secure possession of the ball on a throw-in or on a rebound after the last or only free throw in order to attempt a shot for a field goal.
- If the game clock indicates 0:00.2 or 0:00.1, the only type of a valid field goal made is by tapping or directly dunking the ball.

LAST SECOND SHOT

- Question 2:

- With 0:00.2 second left on the game clock, A2 secures possession of A1's throw-in pass and releases a try for goal before the buzzer sounds to end the period. While the ball is in the air, the buzzer sounds and then the ball enters the basket. Shall the basket count?
- Answer: No.

LAST SECOND SHOT

- Question 3:

- With 0:00.2 second left on the game clock, A2 taps A1's throw-in pass toward the basket. While the ball is in the air, the buzzer sounds and then the ball enters the basket. Shall the basket count?
- Answer: Yes.

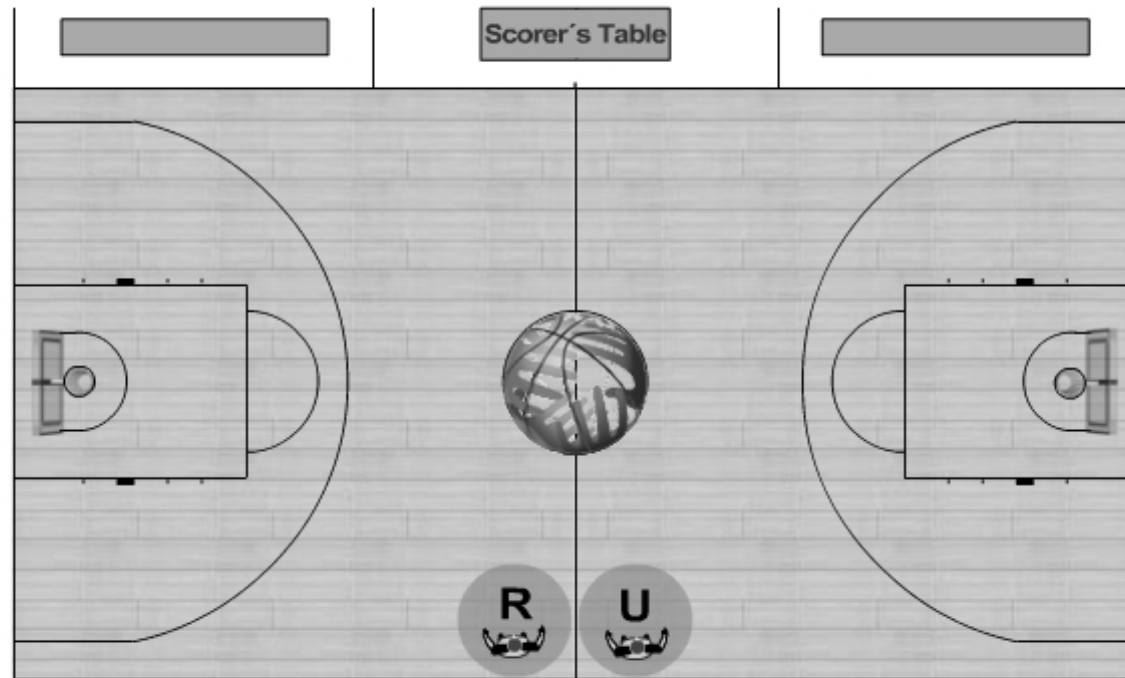
LAST 2 MINUTES

- Team entitled to throw-in in backcourt takes time out, throw-in at throw-in line in its frontcourt

Stehlik Addition:

CIS – Put the ball in play one step above the current 3 pt arc if new throw-in line is not there

Stehlik Addition



LAST 2 MINUTES

■ Question 4:

- With 1:45 left to play in the fourth period, B1 commits an unsportsmanlike foul on A1 who is dribbling the ball in Team A's backcourt. Team A is granted a time-out. After the two free throws awarded to A1, shall the Team A throw-in be taken at mid-court, straddling the line?
- Answer: No.

UNSPORTSMANLIKE FOUL

- During the last two (2) minutes of the fourth period and during the last two (2) minutes of each extra period, the ball is out-of-bounds for a throw-in and still in the hands of the official or already at the disposal of the player taking the throw-in. If at this moment a defensive player on the playing court causes contact with a player of the offensive team on the playing court and a foul is called, it is an unsportsmanlike foul.

UNSPORTSMANLIKE FOUL

■ Question 5:

- With 1:29 to play in the second period, the ball is out-of-bounds at the disposal of A1 for a throw-in. At this moment, B2 causes contact with A2 and a foul is called. Shall the foul be judged unsportsmanlike?
- Answer: No.

8-SECOND RULE

- Count starts as soon as any player touches or is touched by the ball in the backcourt and the team taking the throw-in remains in control of the ball

8-SECOND RULE

■ Question 6:

- A1's throw-in pass from Team A's back court is touched but not controlled by A2 and the ball bounces freely on the floor. Shall the official start an 8-second count immediately?
- Answer: Yes.

8-SECOND RULE

■ Question 7:

- A1's throw-in pass from Team A's backcourt is deflected by B1 and the ball bounces freely on the floor. Shall the official start an 8-second count immediately?
- Answer: Yes.

8-SECOND RULE

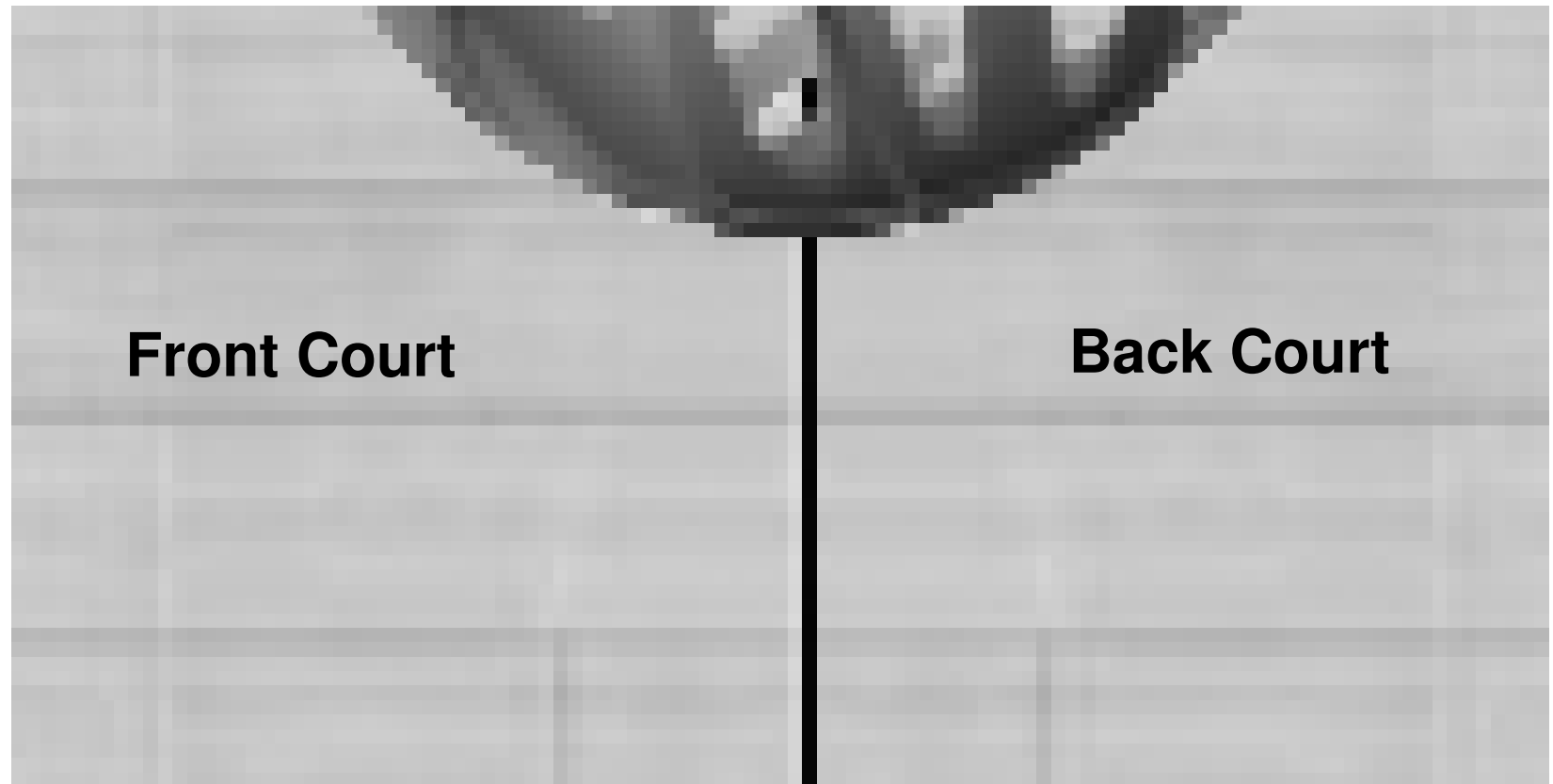
■ Question 8:

- A1's throw-in pass from Team A's backcourt touches an official and the ball bounces freely on the floor. Shall the official start an 8-second count immediately?
- Answer: No.

BALL IN THE FRONT COURT

- The ball touches or is legally touched by an offensive player who has both feet in contact with his frontcourt

Stehlik Addition



BALL IN THE FRONT COURT

- Question 9:

- A1 who is straddling the mid-court line receives a pass from A2 from Team A's backcourt. A1 passes the ball back to A2 who is still in Team A's backcourt. Is this legal?
- Answer: Yes.

BALL IN THE FRONT COURT

- Question 10:

- A1 who is straddling the mid-court line receives a pass from A2 from Team A's backcourt. A1 pivots into Team A's backcourt. Is this a violation?
- Answer: No.

BALL IN THE FRONT COURT

■ Question 11:

- A1 who is straddling the mid-court line receives a pass from A2 from Team A's backcourt. A1 while still straddling the line dribbles the ball. Is this legal?
- Answer: Yes.

BALL IN THE FRONT COURT

- Question 12:

- A1 who is straddling the mid-court line receives a pass from A2 from Team A's backcourt. A1 then passes to A3 who is also straddling the mid-court line. Is this legal?
- Answer: Yes.

BALL IN THE FRONT COURT

- Question 13:

- A1 who is straddling the mid-court line receives a pass from A2 from Team A's backcourt. A1 then passes to A3 who jumps from Team A's front court, catches A1's pass while airborne and lands straddling the mid-court line. Is this a violation?
- Answer: Yes.

BALL IN THE FRONT COURT

- Question 14: (Stehlik Addition)

- A1, airborne from A's frontcourt, intercepts a pass from B1. He lands straddling the mid-court line in such a way that the first foot to land was in the A's front court while the second foot lands in A's back court. Is this a violation?
- Answer: No.

24-SECOND RULE

- On a throw-in, the shot clock starts as soon as the ball touches or is touched by any player on the playing surface and the team taking the throw-in remains in control of the ball.

24-SECOND RULE

■ Question 15:

- After a Team B basket, A1's throw-in pass is deflected by B1 and then deflected by A2. While no player has gained control of the ball on the court, should the 24-second device be started?
- Answer: Yes.

24-SECOND RULE

If the game is **stopped** by an official:

- For a foul or violation (not for the ball having gone out-of-bounds) by the team not in control of the ball,
- For any valid reason by the team not in control of the ball,
- For any valid reason not connected with either team,
- Possession of the ball shall be awarded to the same team that previously had control of the ball.

24-SECOND RULE (CONTINUED)

- If the throw-in is administered in the backcourt, the twenty-four (24) second clock shall be reset to twenty-four (24) seconds.
 - If the throw-in is administered in the frontcourt, the twenty-four (24) second clock shall be reset as follows:
- If fourteen (14) seconds or more is displayed on the shot clock at the time when the game was stopped, the shot clock shall not be reset, but shall continue from the time it was stopped.
- If thirteen (13) seconds or less is displayed on the shot clock at the time when the game was stopped, the shot clock shall be reset to fourteen (14) seconds.

Stehlik Addition

- If we weren't going to reset the shot clock in the past, then we still don't (out of bounds, injured player on offensive team, jump ball, double foul, offsetting penalties)
- If we were going to reset to 24, then the new rules apply (foul, kicked ball, injured defensive player)
- Note: applies when same team maintains control
- Note: T, Unsportsmanlike, Disqualifying – new 24 (think straddling player is now in the back court)

24-SECOND RULE (CONTINUED)

■ Question 16:

- With 1:45 left to play in the fourth period, A1 is dribbling the ball in Team A's backcourt for 5 seconds when B1 deliberately deflects the ball with his foot? The shot clock shows 19 seconds. Team A is granted a time-out. When play resumes with a Team A throw-in at the throw-in line, shall the shot clock be reset to 24?
- Answer: No.

24-SECOND RULE (CONTINUED)

■ Question 17:

- A1 is dribbling the ball in Team A's frontcourt when B1 fouls A1? The shot clock shows 18 seconds. When play resumes with a Team A throw-in, shall the shot clock be reset to 24?
- Answer: No.

24-SECOND RULE (CONTINUED)

■ Question 18:

- A1 is dribbling the ball in Team A's frontcourt when B1 deflects the ball which goes out of bounds in Team A's backcourt? The shot clock shows 10 seconds. When play resumes with a Team A throw-in, shall the shot clock be reset to 24?
- Answer: No.

24-SECOND RULE (CONTINUED)

■ Question 19:

- A1 is dribbling the ball in Team A's frontcourt when play is stopped because of an injury to A2. The shot clock shows 10 seconds. When play resumes with a Team A throw-in, shall the shot clock be reset to 14?
- Answer: No.

24-SECOND RULE (CONTINUED)

■ Question 20:

- A1 is dribbling the ball in Team A's backcourt when B2 commits an unsportsmanlike foul on A2. The shot clock shows 19 seconds. When play resumes with a Team A throw-in straddling the mid-court line after A2's free throws, shall the shot clock be reset to 24?
- Answer: Yes.

24-SECOND RULE (CONTINUED)

■ Question 21:

- With Team A in control of the ball and 5 seconds left on the shot clock, A1 and B1 are called for a double foul in Team B's restricted area? When play resumes with a Team A throw-in in Team A's front court , shall the shot clock be reset to 14?
- Answer: No.

NO-CHARGE SEMI-CIRCLE AREA

- The no-charge semi-circle areas are drawn on the playing court for the purpose of designating a specific area for the interpretation of charge/block situations under the basket.
- On any penetration play situation into the no-charge semi-circle area a contact caused by an offensive player with a defensive player inside the no-charge semi-circle shall not be called as an offensive foul, unless the offensive player is illegally using his hands, arms, legs or body, when
 - the offensive player is in control of the ball whilst airborne, and
 - he attempts a shot or passes off, and the defensive player has both feet inside the no-charge semi-circle area

*** NOT ADOPTED BY CIS ***

Stehlik Addition

- Excerpt from 2010 FIBA Interpretations

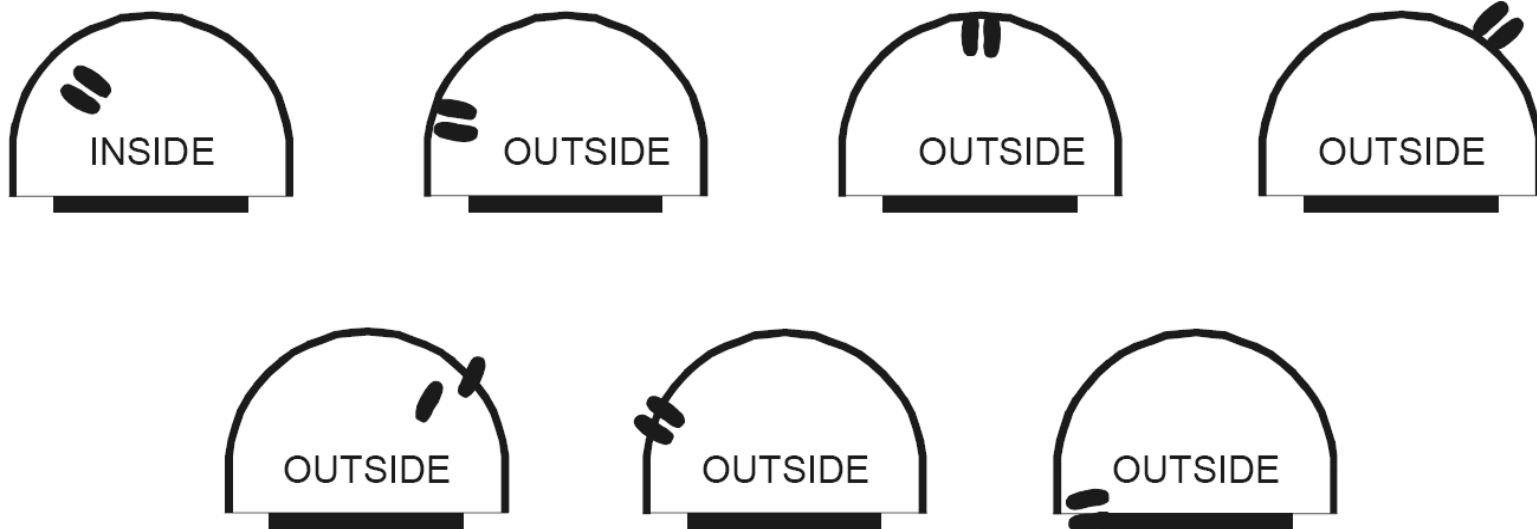


Diagram 1 Position of a player inside/outside the no-charge semi-circle area

Stehlik Addition

- Not necessarily a Blocking Foul if the defender is within the semi-circle – there is still a decision to be made on severity and advantage gained by the contact
- Definitely not a Charging Foul if the defender is within the semi-circle IF all of the other conditions are met